

# BLACKMER PARTS LIST

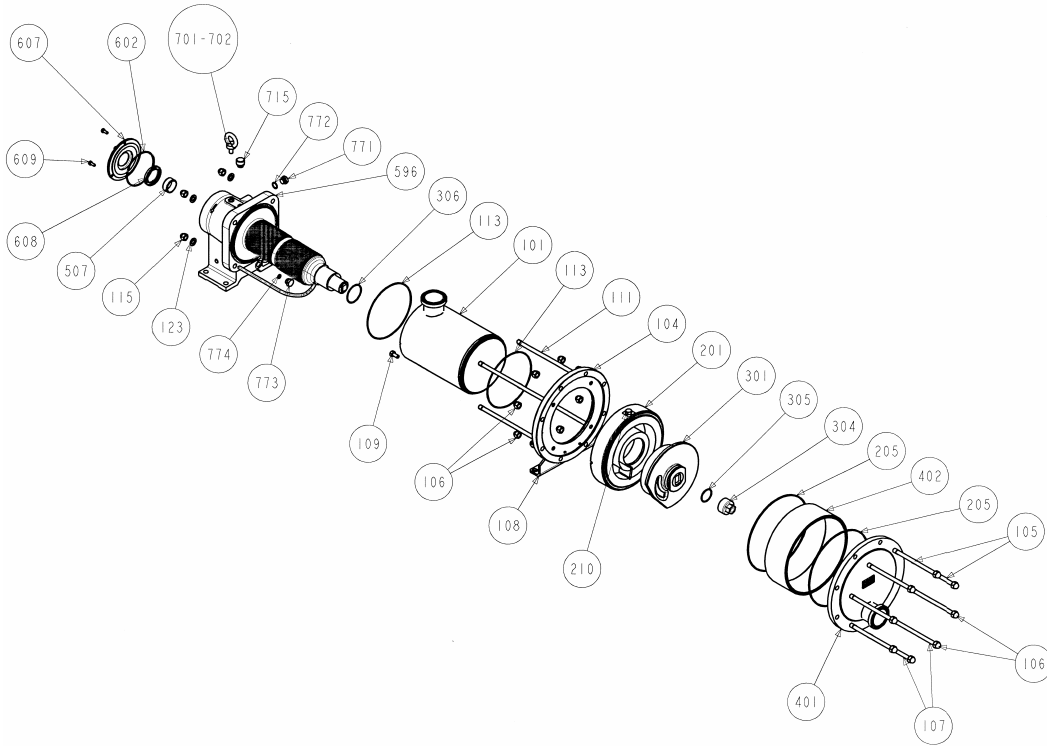
## PUMP MODELS: C24-I, C36-I

### PUMP & TRANSMISSION

(See Instructions 1001-C00 for Installation, Operation and Maintenance)

967009      **PARTS LIST**  
Page 1 of 1      **1001-C01**

Section	1001
Effective	Sept 2006
Replaces	May 2005



Kit No.	Ref. No.	Description	Parts per Pump	Part No.	Kit No.	Ref. No.	Description	Parts per Pump	Part No.	
100		Inlet Tube with ANSI Flanges – consists of:	1	Y312230	596		Complete Transmission Assembly	1	Y312699	
		Inlet Tube with Clamp Flanges – consists of:		Y312234		400		Cover Plate with ANSI Flanges	1	Y312255
		Inlet Tube with SMS Flanges – consists of:		Y312228				Cover Plate with SMS Flanges		Y312247
		Inlet Tube with Cherry Burrel Flanges – consists of:		Y312232				Cover Plate with Clamp Flanges		Y312251
		Inlet Tube & ANSI Flanges & Heat Jackets		CF				Cover Plate with Cherry Burrel Flanges		Y312249
		Inlet Tube & Clamp Flanges & Heat Jackets		CF				401* Cover Plate with Flange		(1)
		Inlet Tube & SMS Flanges & Heat Jackets		CF			402* Spacer	(1)		
		Inlet Tube & Cherry Burrel Flanges & Heat Jackets		CF			008	Transmission Plug Kit – consists of:	1	Y312196
		101* Inlet Tube		(1)				701* Lifting eye bolts	(1)	
		104* Inlet Tube Flange		(1)				702* Plug Washer	(1)	
	108* Foot Bracket	(1)		715* Filler Plug	(1)					
	109* Screw	(2)		773* Drain Plug	(1)					
119		C24-I Stud & Hex Head Nut Kit - consists of:	1	Y312184	206		Pump Seal Kit- FKM (std) – consists of:	1	Y312246	
		C36-I Stud & Hex Head Nut Kit - consists of:		Y312260			Pump Seal Kit -PTFE Encaps. – consists of:		Y312190	
		105* Cover Plate Stud	(6)			Pump Seal Kit-FDA FKM – consists of:	CF			
		106* Hex Head Nut	(16)			205* Seal Ring	(2)			
		107* Cover Plate & Foot Bracket Stud	(2)			113* Seal Ring	(2)			
		111* Inlet Tube Stud	(4)			306* Seal Ring	(1)			
		115* Hex Head Nut	(4)			305* Seal Ring	(1)			
200		C24-I Cylinder & Disc Assembly – consists of:	1	Y312188	009		Transmission Seal Kit – consists of:	1	Y312372	
		C36-I Cylinder & Disc Assembly – consists of:		Y312261			602* Seal Ring	(1)		
		201* Cylinder	(1)			507* Bushing	(1)			
		301* Disc	(1)			608* Lip Seal	(1)			
304		Disc Nut – C24-I	1	Y219426		609* Screws	(3)			
		– C36-I		Y219455						

Keep this parts list with Installation, Operation and Maintenance Instructions.  
\* ( ) Parts included in Kit      CF - Consult Factory



**KI Pumps & Systems, Inc.,    206 Enterprise Road,    P.O. Box 180287,    Delafield, WI 53018-1768**  
TEL (888) 547 8678    FAX (262) 547 8678    info@kipumps.com    www.blackmerpumps.com