

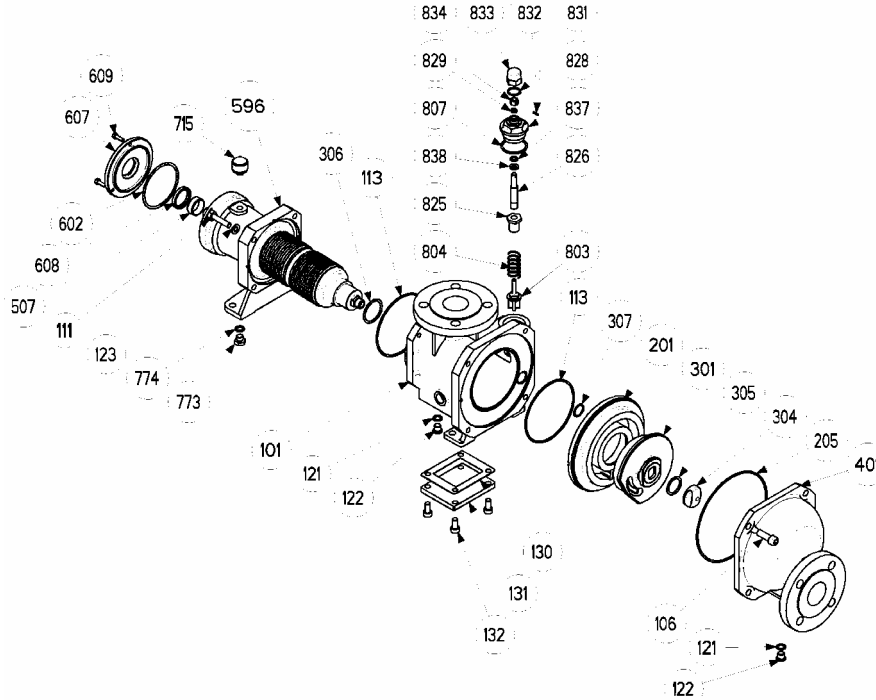
BLACKMER PARTS LIST

PUMP MODELS: C4-A, C8-A

PUMP & TRANSMISSION

(See Instructions 1001-E00 for Installation, Operation and Maintenance)

Section	1001
Effective	July 2005
Replaces	February 2001



Kit No.	Ref. No.	Description	Parts per Pump	Part No.	Kit No.	Ref. No.	Description	Parts per Pump	Part No.	
100		Inlet Sleeve w/ ANSI Compatible 150# Flange	1	Y311356	820		Bypass Assembly without Spring	1	Y311366	
		Inlet Sleeve w/ ANSI Flange & Heat Jacket		Y311360		803*	Valve	(1)		
		101* Inlet Sleeve	(1)			807*	Seal Ring	(1)		
		130* Jacket Cover Plate Gasket	(1)			825*	Spring Support	(1)		
		131* Heat Jacket Cover Plate	(1)			826*	Adjusting Screw	(1)		
		132* Capscrews-Heat Jacket Cover Plate	(4)			828*	R/V Cover	(1)		
119		C4-A & C8-A Bolt Kit	1	Y311508		829*	Spring	(1)		
		C4-A & C8-A w/ Heat Jacket Bolt Kit		Y311509		831*	Pin	(1)		
		106 Hex Socket Bolts	(6)			832*	Flat Seal	(1)		
		111* Inlet Sleeve Stud	(4)			833*	Cap	(1)		
		123* Washer	(4)			834*	Adjusting Nut	(1)		
		132* Screw (With Heat Jacket Only)	(4)			837*	Seal Ring	(1)		
200		C4-A Cylinder & Disc Assembly	1	Y313393		838*	Washer	(1)		
		C8-A Cylinder & Disc Assembly		Y312061						
		201 Cylinder	(1)				Pump Seal Kit- FKM (std)	1	Y311358	
		301* Disc	(1)				Pump Seal Kit-PTFE Encaps.		Y311908	
596		Complete Transmission Assembly	1	Y311744			Pump Seal Kit- FKM - Heat Jacket Pump		Y311361	
							Pump Seal Kit-PTFE Encaps.- Heat Jacket Pump		Y311910	
009		Transmission Seal Kit:	1	Y311343	206	113*	Seal Ring	(2)		
		507 Bushing	(1)			130*	Jacket Cover Plate Gasket	(1)		
		602* Seal Ring	(1)			205*	Seal Ring	(1)		
		608* Lip Seal	(1)			305*	Seal Ring	(1)		
		609* Screws	(3)			306*	Seal Ring	(2)		
						307*	Seal Ring	(1)		
008		Transmission Plug Kit	1	Y311441		807*	Seal Ring	(1)		
		715 Filler Plug	(1)			832*	Flat Seal	(1)		
		773* Drain Plug	(1)			837*	Seal Ring	(1)		
		774* Plug Washer	(1)				Relief Valve Spring			
140		Pump Drain Plug Set	1	Y311510		804		.8 - 2.5 Bars (12 - 36 psi)		Y201181
		121 Metallic Seal Ring	(2)					2 - 6.5 Bars (29 - 94 psi)	1	Y201182
		122 Plug	(2)				5 - 8 Bars (72 - 116 psi)		Y311488	
							3 - 5 Bars (43 - 72 psi)		Y201183	

Keep this parts list with Installation, Operation and Maintenance Instructions.

* () Parts included in Kit

