

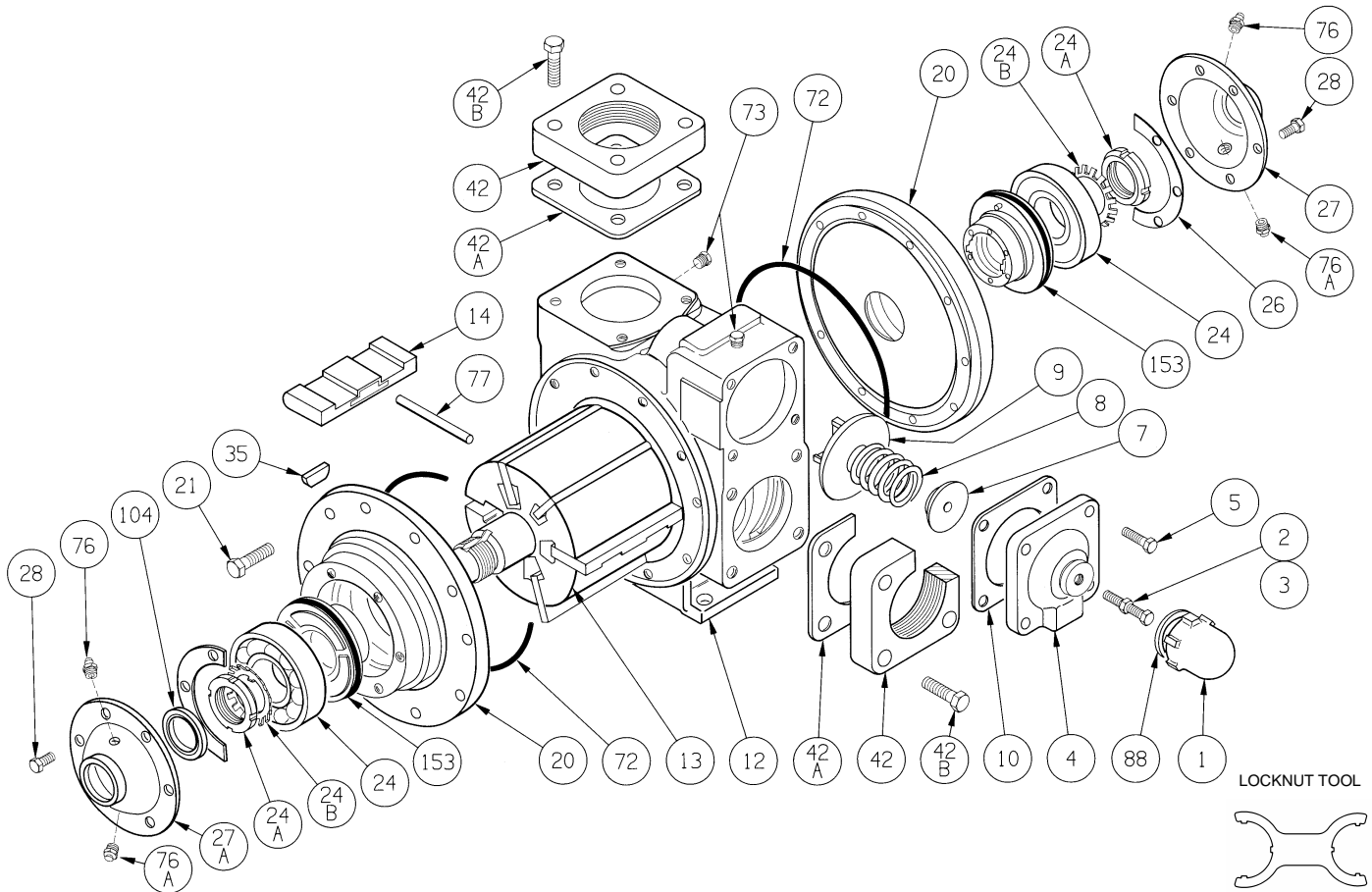
BLACKMER PARTS LIST

PUMP MODEL: X3E

961821 **PARTS LIST**
Page 1 of 2 **101-B07**

Section 101
Effective Sept 2007
Replaces Dec 2006

See Instructions 101-B00 for Installation, Operation and Maintenance



Ref. No.	Description	Parts per Pump	Part No.	Ref. No.	Description	Parts per Pump	Part No.
1	Cap - Relief Valve (R/V)	1	413952	24	Ball Bearing	2	¹ 903172
2	Adjusting Screw - R/V	1	431808	24A	Locknut - Bearing	2	903523
3	Locknut - Adjusting Screw	1	922923	24B	Lockwasher - Bearing	2	¹ 903524
4	Cover - R/V	1	411807	26	Gasket - Bearing Cover	2	¹ 385125
5	Capscrew - R/V Cover	4	920331	27	Bearing Cover - Outboard	1	041817
7	Spring Guide - R/V	1	421805	27A	Bearing Cover - Inboard	1	041815
8	Spring - R/V (36-50 psi)	1	471805	28	Capscrews - Bearing Cover	12	920285
	Spring - R/V (51-110 psi)		471806	35	Key - Shaft	1	¹ 909130
	Spring - R/V (111-125 psi)		471809	42	Flange - 3" NPT (Std.)*	2	651803
9	Valve - R/V (Std.)	1	451807	42A	Gasket - NPT Flange (Std.)	2	¹ 381816
	Valve - R/V (Nickel Plated)		451808	42B	Capscrews - NPT Flange (Std.)	8	920532
10	Gasket - R/V Cover	1	¹ 531803	72	O-Ring - Head (FKM) (Std.)	2	¹ 711938
12	Cylinder	1	021805		O-Ring - Head (PTFE)		702082
13	Rotor & Shaft (Includes Ref. Nos. 24A & 24B)	1	261839	73	Gage Plug	2	908198
				76	Grease Fitting	2	317815
				76A	Grease Relief Fitting	2	701992
14	Vane - Duravane (Std.)	6	¹ 091819	77	Push Rod	3	¹ 121807
	Vane - EC Cast Iron		091821	88	Gasket - R/V Cap	1	¹ 533908
	Vane - EC Laminate		091829	104	Grease Seal	1	¹ 331908
20	Head	2	031815				
21	Capscrews - Head	20	920369				
					Tool - Locknut		903091
					Kit - Maintenance		898958

¹ Included in Maintenance Kit

Keep this parts list with the Installation, Operation and Maintenance Instructions.

* See Page 2 for Weld / ANSI flange options.

SS = Stainless Steel.

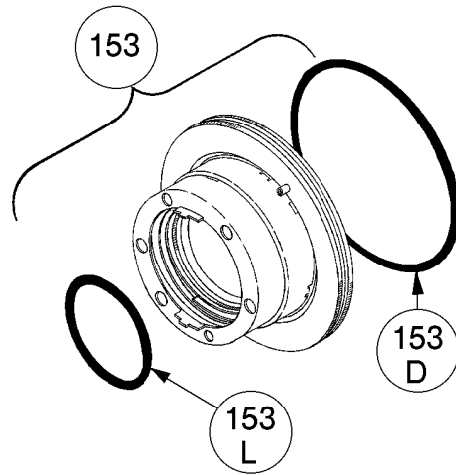
EC = Extra-Clearance.

MECHANICAL SEALS

Ref. No.	Part Name	Parts Per Pump	Part No.
153	Mechanical Seal Complete - (Std.) Cast Iron Stationary Seat, Carbon Seal Face, FKM O-Rings. (IVCV)	2	¹ 331883
	Mechanical Seal Complete - Cast Iron Stationary Seat, PTFE O-Ring, Carbon Seal Face w/ PTFE Seal Ring. (IACT)		331873
153D	O-Ring - Stationary (FKM)	2	711931
	O-Ring - Stationary (PTFE)		702080
153L	O-Ring - Rotating (FKM)	2	701962
	Seal Ring - Rotating (PTFE)		**

¹ Included in Maintenance Kit

**PTFE Rotating Seal Ring is not available as a separate part.



FLANGE OPTIONS

Ref. No.	Part Name	Parts Per Pump	Part No.
42	Flange - 3" Weld	2	655102
	Flange - 3" ANSI		651817
42B	Capscrews - Weld / ANSI Flange	8	920510
42C	O-Ring - Weld/ANSI Fig. (FKM)	2	701968
	O-Ring - Weld/ANSI Fig. (PTFE)		702101

