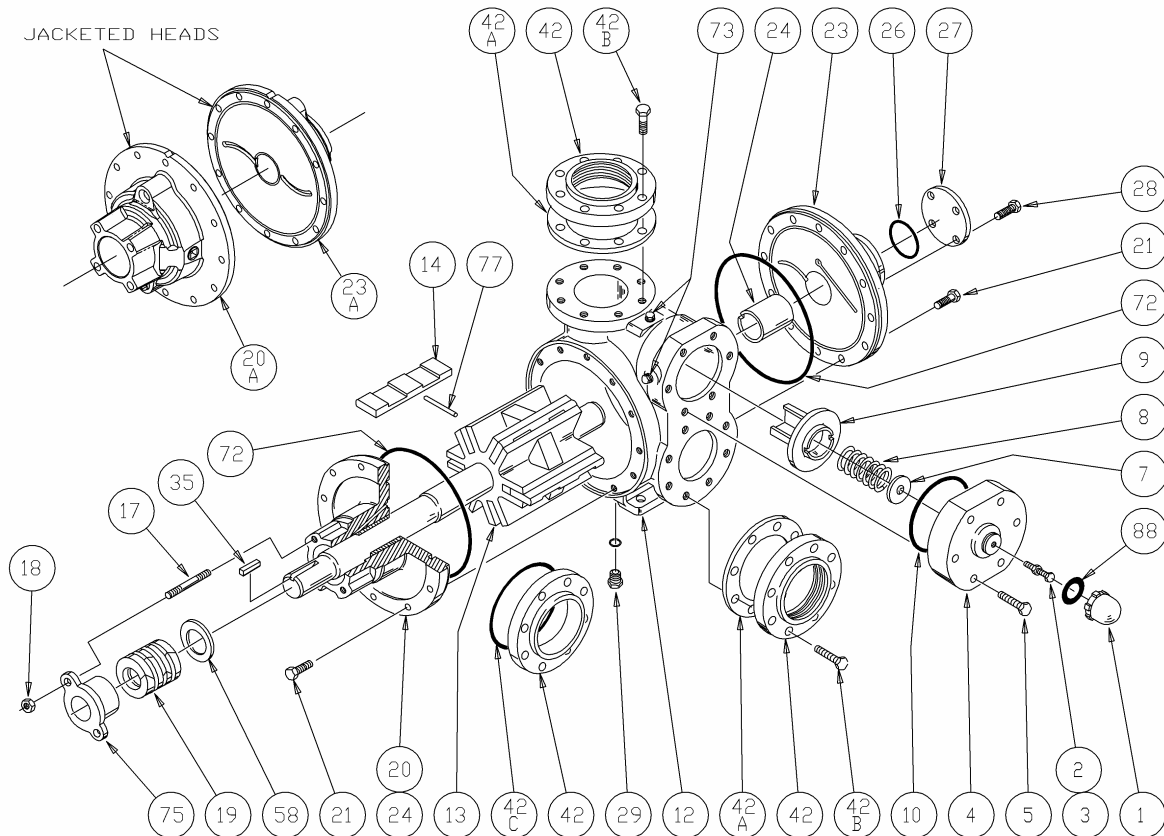


BLACKMER PARTS LIST

PUMP MODEL: NP4F

See Instructions 103-A00 for Installation, Operation and Maintenance

Section 103
Effective Sept 2007
Replaces July 2007



Ref. No.	Description	Parts per Pump	Part No.	Ref. No.	Description	Parts per Pump	Part No.
1	Cap - Relief Valve (R/V)	1	413952	20	Head & Bushing Asy. - Inboard	1	031976
2	Adjusting Screw - R/V (Std.)	1	436307	20A	Head & Bushing Asy. - Inboard (Jacket)	1	031972
	Adjusting Screw - R/V ¹		436311	21	Capscrews - Head	24	920532
3	Locknut - Adjusting Screw	1	436355	23	Head & Bushing Asy. - Outboard	1	031977
4	Cover - R/V (Std.)	1	411968	23A	Head & Bushing Asy. - Outboard (Jacket)	1	031973
	Cover - R/V ¹		411969	24	Sleeve Bearing	2	⁵ 161900
5	Capscrew - R/V Cover (Std.)	6	920351	26	O-Ring - Bearing Cover (FKM) (Std.)	1	⁵ 702222
	Capscrew - R/V Cover ¹		920421		O-Ring - Bearing Cover (PTFE)		702225
7	Spring Guide - R/V	1	426355	27	Bearing Cover	1	041900
8	Spring - R/V (51-75 psi)	1	476310	28	Capscrews - Bearing Cover	4	920611
	Spring - R/V (76-150 psi)		476305	29	Pipe Plug Asy. (SAE # 6) (FKM) (Std.)	1	908212
	SS Spring - R/V (151-200 psi) ¹		476969		Pipe Plug Asy. (SAE # 6) (PTFE)		908213
9	Valve - R/V (Std.)	1	456315	35	Key - Shaft	1	⁵ 909191
	Valve - R/V (Nickel Plated)		456300	42 ⁴	Flange - 4" NPT (Std.)	2	651900
10	O-Ring - R/V Cover (FKM) (Std.)	1	⁵ 702229		Flange - 4" Weld		651906
	O-Ring - R/V Cover (PTFE)		702230	42A	Gasket - NPT Flange (Comp.) (Std.)	2	⁵ 381904
12	Cylinder (Std.)	1	021906	42B	Capscrew	16	920532
	Cylinder w/ SAE Drain (Ductile Iron)		021911	42C	O-Ring - Flange (FKM)	0 - 2	702238
13	Rotor & Shaft, Open Rotor (Shown)	1	261968		O-Ring - Flange (PTFE)		702239
	Rotor & Shaft, Closed Rotor (Optional)		261980	72	O-Ring - Head (FKM) (Std.)	2	⁵ 702128
14	Vane - Duravane (Std.) ²	6	⁵ 091924		O-Ring - Head (PTFE)		702129
	Vane - EC Laminate		091931	73	Gage Plug	2	908198
	Vane - EC Cast Iron		091952		77		Push Rods
	Vane - EC Bronze		091953	88		Gasket - R/V Cap	1
—	Kit - Maintenance	—	898932	—	—		

EC = Extra Clearance SS = Stainless Steel

¹ High Pressure Relief Valve parts must be used as a group (includes p/n's 436311, 411969, 920421, and 476969) (ref 2, 4, 5 & 8).

² 150 psi maximum for Duravanes

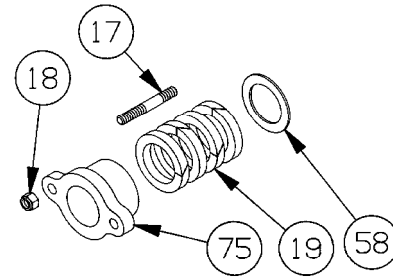
⁴ See back page for Flange Options.

⁵ Included in Maintenance Kit

⁶ R/V Caps on earlier pumps used an O-ring; the 533909 Gasket may be used with the O-Ring type R/V Caps..

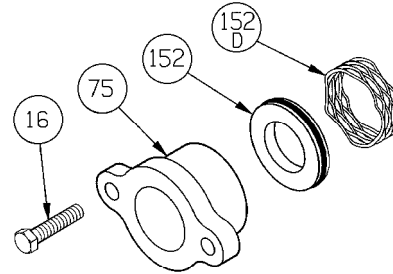
PACKING - STANDARD

Ref. No.	Part Name	Parts Per Pump	Part No.
17	Stud - Packing Follower	2	921610
18	Nut - Packing Follower Stud	2	922435
19	Packing Set	1	321968
58	Pack Washer	1	351900
75	Packing Follower	1	141968



LIP SEAL - OPTIONAL

Ref. No.	Part Name	Parts Per Pump	Part No.
16	Capscrew - Follower	2	920640
75	Seal Follower	1	141968
152	Lip Seal Assembly (To 500°F)	1	702246
152D	Wave Spring	1	321901

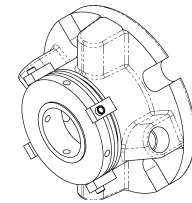


NOTE: A Commercial Mechanical Seal (cartridge type) can be used in place of packing or lip seals. Consult mechanical seal manufacturer for more information.

COMMERCIAL MECHANICAL SEAL (Cartridge Type) - OPTIONAL

Ref. No.	Part Name	Parts Per Pump	Part No.
-	John Crane 5610	1	331940

NOTE: Seal Materials (Sil-Car, Carbon, FKM)

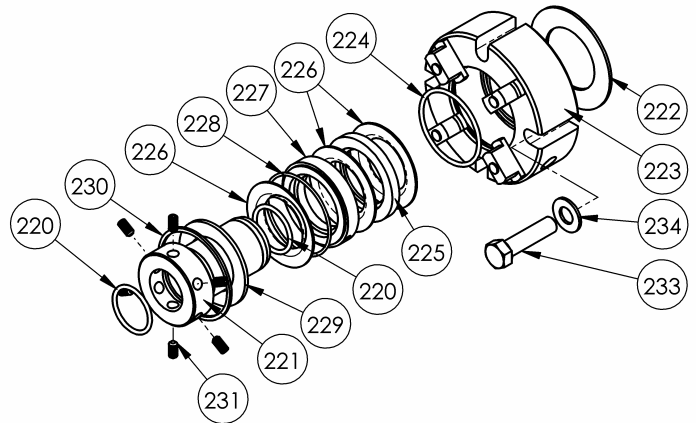


Commercial Mechanical Seal Cartridge Type

TRIPLE-LIP CARTRIDGE SEAL - OPTIONAL

Ref. No.	Part Name	Seal	Seal Rebuild Kit
—	TRIPLE-LIP CARTRIDGE SEAL	331948	899107
220	Shaft Sleeve O-Ring	2	X
221	Shaft Sleeve	1	
222	Gasket	1	X
223	Gland Plate Assembly	1	
224	Element O-Ring	1	X
225	Seal Spacer	1	X
226	Seal Element	3	X
227	Flushing Spacer	1	X
228	Flushing Spacer O-Ring	1	X
229	Retaining Ring	1	
230	Snap Ring	1	X
231	Shaft Sleeve Setscrews	6	X
233	Gland Capscrew	4	
234	Flat Washer	4	

X = Parts Included in Seal Rebuild Kit



FLANGE OPTIONS

Ref. No.	Part Name	Parts Per Pump	Part No.
42	Flange - ANSI 4" 150 lb. R.F.	0 - 2	651917

