
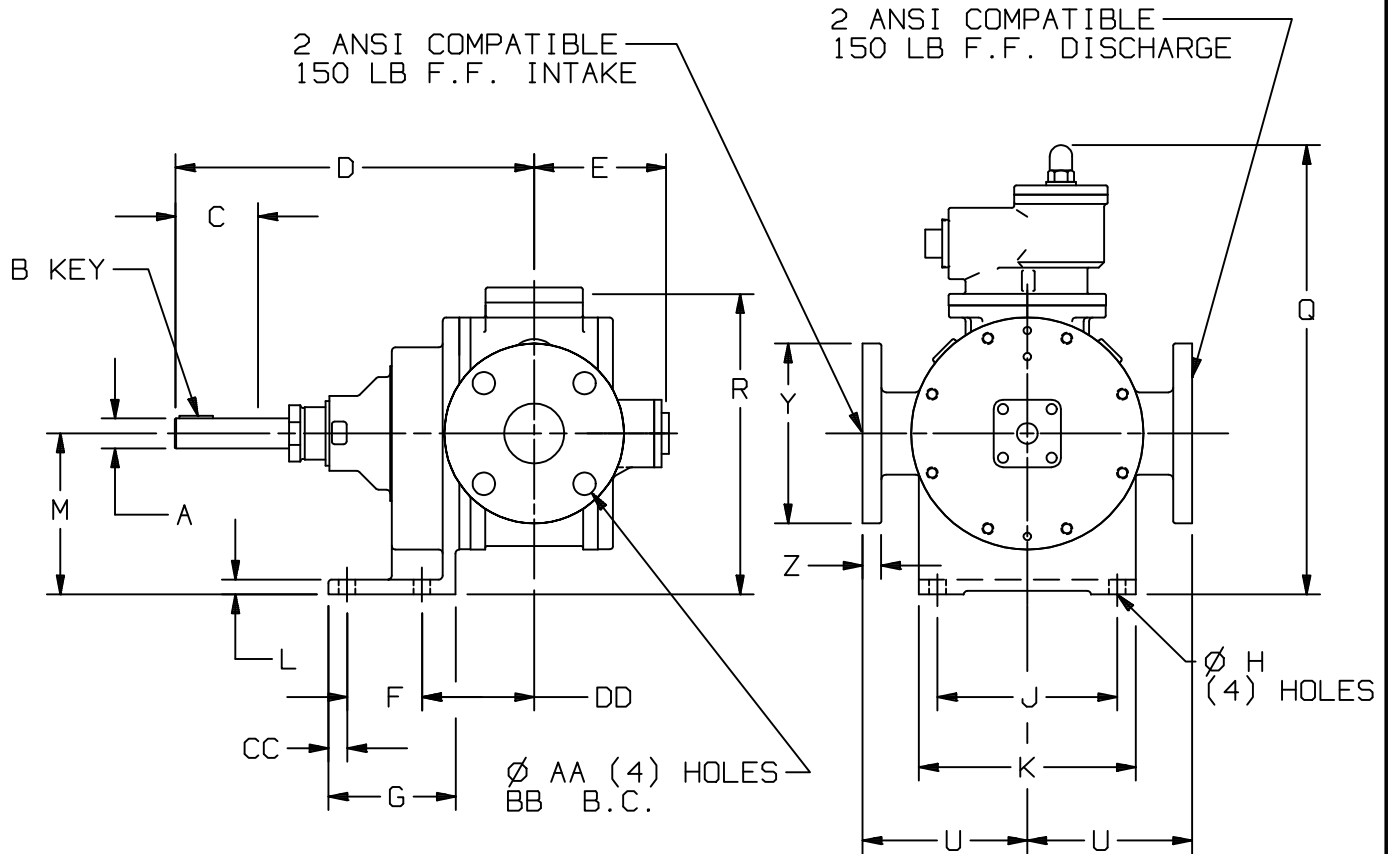


DIMENSIONS 104-105		TYPE	SIZE	UNIT STYLE	
Section Effective Replaces Pg 1/2	104 APRIL 2003 DECEMBER 1999	SNP-SNPJ	2	PO	

RIGHT HAND ROTATION. FOR LEFT HAND ROTATION SHAFT PROJECTION IS OPPOSITE THAT SHOWN.



MOTOR		UNITS	DIMENSIONS									
FRAME SIZE			A	B	C	D	E	F	G	H	J	K
		IN	1	1/4	2 3/4	12	4 1/2	2 1/2	4 1/4	9/16	6	7 1/4
		MM	25,4	6,4	69,9	304,8	114,3	63,5	108	14,3	152,4	184,2
			L	M	N	P	Q	R	S	T	U	V
		IN	1/2	5 3/8	—	—	15	10 1/4	—	—	5 1/2	—
		MM	12,7	136,5	—	—	381	260,4	—	—	139,7	—
			W	X	Y	Z	AA	BB	CC	DD	EE	FF
		IN	—	—	6	5/8	3/4	4 3/4	5/8	3 3/4	—	—
		MM	—	—	152,4	15,9	19	120,7	15,9	95,3	—	—
			WEIGHT									
		LBS	88									
		KG	40									

DIMENSIONS 104-105

Section 104
 Effective APRIL 2003
 Replaces JANUARY 2000
 Pg 2/2

TYPE

SIZE

UNIT
 STYLE

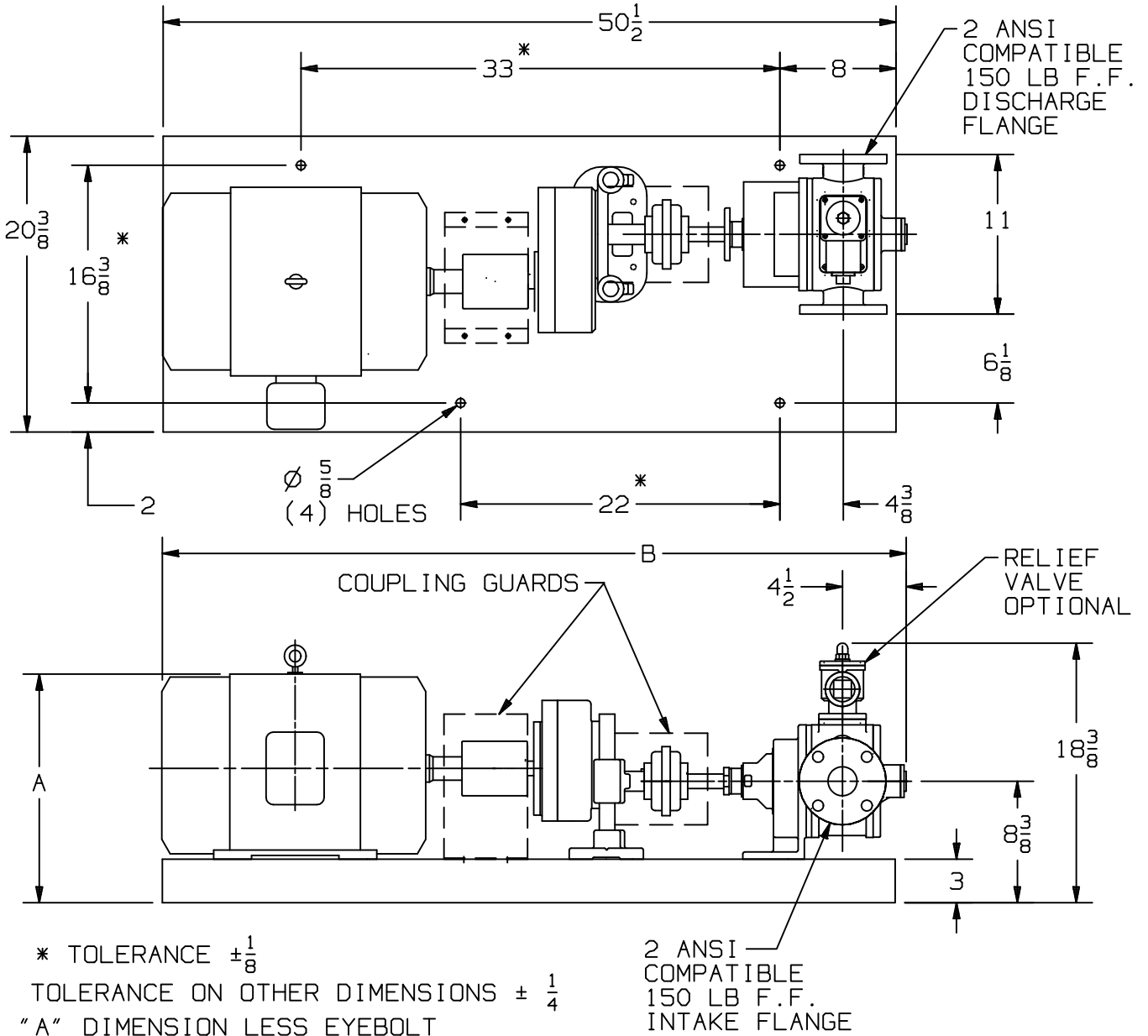
SNP-SNPJ

2

HRA



RIGHT HAND ROTATION. FOR LEFT HAND ROTATION, INTAKE, DISCHARGE, AND RELIEF VALVE ARE OPPOSITE THAT SHOWN.



FRAME SIZE	MOTOR		BASE NO.	DIMENSIONS						APPROX. UNIT WT. - POUNDS	
				A	B					LESS MOTOR	INCL. MOTOR
182T			901684	12 5/8	52 1/8						
184T			901684	12 5/8	52 1/8						
213T			901684	14 1/8	52 1/8						
215T			901684	14 1/8	52 1/8						
254T			901684	16 3/8	53 1/2						
256T			901684	16 3/8	55 1/4						