

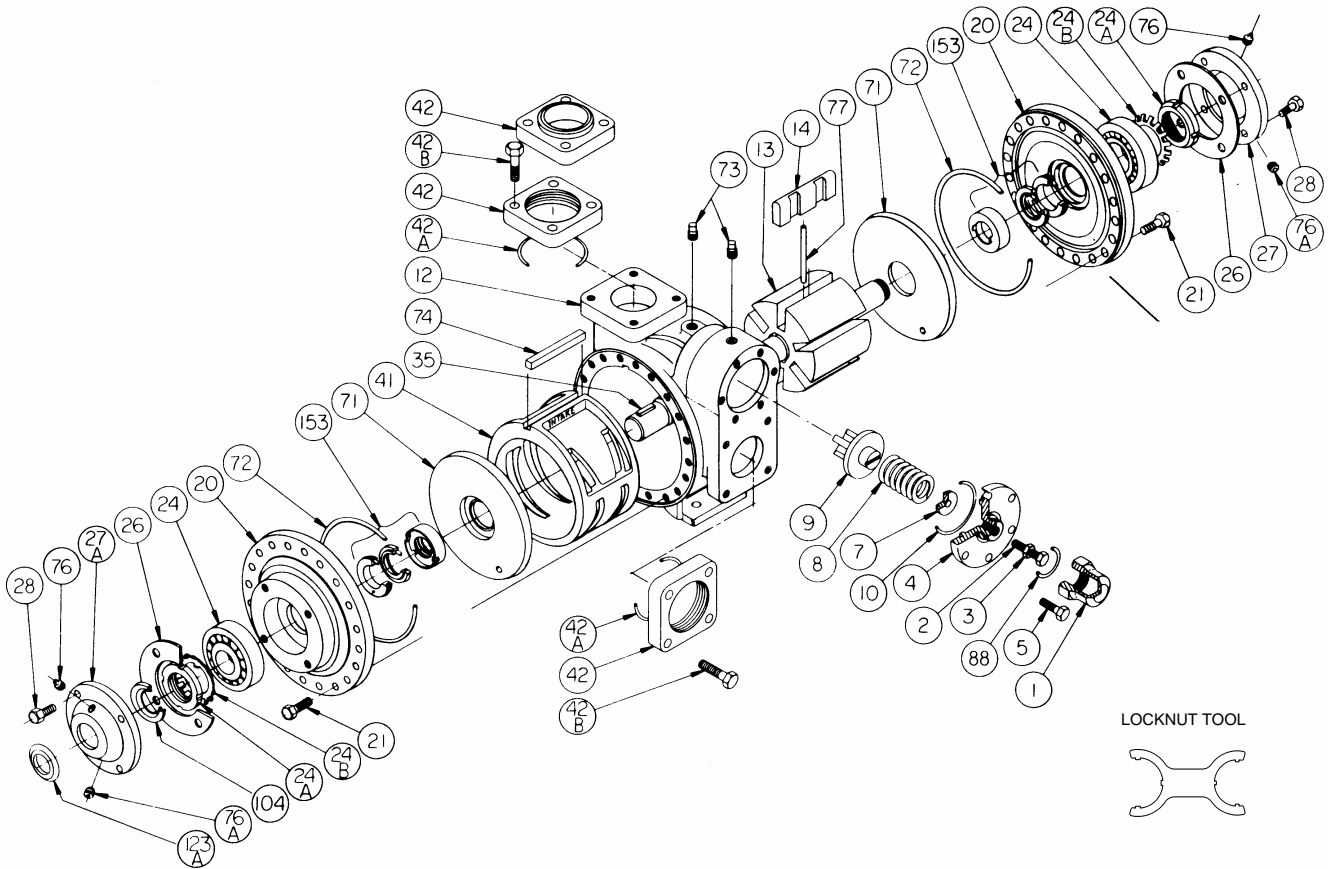
BLACKMER PARTS LIST

PUMP MODELS: XL2B, XL3B

DISCONTINUED MODELS: XL(S)2A-N, XL(S)3A-N

See Instructions 107-B00 or for Installation, Operation and Maintenance

Section 107
Effective Sept 2007
Replaces Jan 2007



Ref. No.	Description	Parts per Pump	Size 2 Part No.	Size 3 Part No.	Ref. No.	Description	Parts per Pump	Size 2 Part No.	Size 3 Part No.
1	Cap - Relief Valve (R/V)	1	414402	414402	27	Bearing Cover - Outboard	1	041433	041817
2	Adjusting Screw - R/V	1	433905	435109	27A	Bearing Cover - Inboard	1	041431	041815
3	Locknut - Adjusting Screw	1	922923	922923	28	Capscrews - Bearing Cover	8-12	920285	920285
4	Cover - R/V	1	414408	415109	35	Key - Shaft	1	¹ 909130	¹ 909130
5	Capscrew - R/V Cover	6	920316	920331	41	Liner	1	² 183913	² 185116
7	Spring Guide - R/V	1	424401	425109	42 ⁴	Flange - NPT	2	654401	655112
8	Spring - R/V (51-75 psi)	1	471425	471612		Flange - Weld		654405	655102
	Spring - R/V (76-110 psi)		471428	471621	42A	O-Ring - Flange (FKM) (Std)	2	¹ 702086	¹ 711931
	Spring - R/V (111-150 psi)		471424	475109		O-Ring - Flange (PTFE)		702078	702080
9	Valve - R/V	1	454405	455109	42B	Capscrew- NPT Flange	8	920384	920547
10	O-Ring - R/V Cover (FKM)(Std)	1	¹ 711929	¹ 701924		Capscrew - Weld/ANSI Flg			920351
	O-Ring - R/V Cover (Buna-N)		701919	701925	71	Disc	2	² 064412	² 065112
	O-Ring - R/V Cover (PTFE)		702077	702079	72	O-Ring - Head (FKM) (Std.)	2	¹ 702045	¹ 711938
12	Casing	1	014405	015127		O-Ring - Head (PTFE)		702081	702082
13	Rotor & Shaft (Std.)	1	² 264443	² 265149	73	Gage Plug	2	908198	908198
	EC Rotor & Shaft (.045) (Both include Ref. 24A & 24B)		263927	265143	74	Key - Liner	1	² 183991	² 185191
14	Vane - Duravane (Std.)	6	¹ 091419	¹ 095131	76	Grease Fitting	2	317815	317815
	Vane - EC Cast Iron		093923	095119	76A	Grease Relief Fitting	2	701992	701992
	Vane - EC Laminate		091429	095107	77	Push Rod	3	¹ 123905	¹ 125105
20	Head	2	034416	035128	88	O-Ring - R/V Cap (FKM) (Std)	1	¹ 701979	¹ 701979
21	Capscrews - Head	32-40	920351	920369		O-Ring - R/V Cap (PTFE)			702075
24	Ball Bearing	2	¹ 903156	¹ 903172	104	Grease Seal	1	¹ 331918	¹ 331908
24A	Locknut - Bearing	2	² 903521	² 903523	123A	Dirt Shield	0 -1	¹ 701480	NA
24B	Lockwasher - Bearing	2	¹ 903522	¹ 903524		Tool - Locknut		903091	903091
26	Gasket - Bearing Cover	2	¹ 383940	¹ 385125		Kit - Maintenance		898963	898964
						Kit - Rebuild		899063	899064

¹ Included in Maintenance Kit and Rebuild Kit

² Included in Rebuild Kit

⁴ See more flanges on backside.

Keep this parts list with Installation, Operation and Maintenance Instructions.

EC = Extra Clearance

KI Pumps & Systems, Inc., 206 Enterprise Road, P.O. Box 180287, Delafield, WI 53018-1768

TEL (888) 547 8678

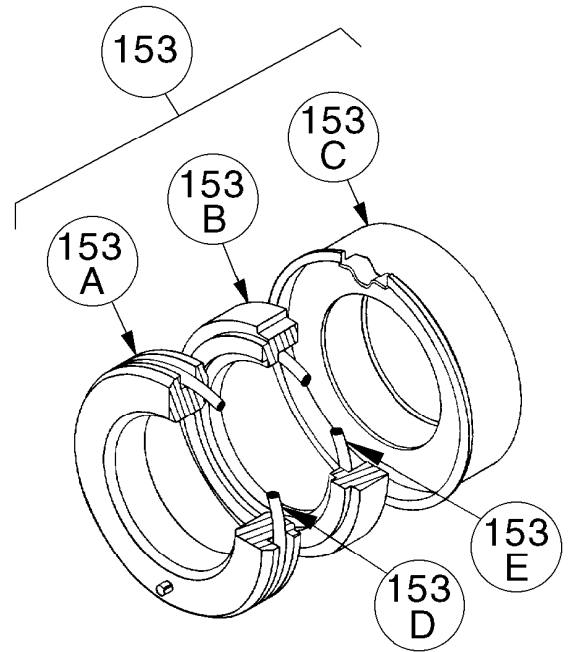
FAX (262) 547 8678

info@kipumps.com

www.blackmerpumps.com

MECHANICAL SEALS

Ref. No.	Part Name	Parts Per Pump	Size 2 Part No.	Size 3 Part No.
153	Mechanical Seal Complete – (Std.) Hardened Steel Stationary Seat, Carbon Seal Face, FKM O-Rings. (SVCV)	2	¹ 331656	¹ 335129
	Mechanical Seal Complete – Hardened Steel Stationary Seat, PTFE O-Ring, Carbon Seal Face w/PTFE Seal Ring. (SACT)		333991	335175
	Mechanical Seal Complete – Silicon Carbide Stationary Seat, PTFE O-Ring, Carbon Seal Face w/PTFE Seal Ring. (LACT)		334492	335299
	Mechanical Seal Complete – Silicon Carbide Stationary Seat, Carbon Seal Face, FKM O-Rings. (LVCV)		334491	335298
153A#	Stationary Seat (Hardened Steel)	2	331828	335126
	Stationary Seat (Silicon Carbide)		334422	335141
153B#	Rotating Seal Face (Carbon)	2	331609	331867
153C#	Jacket Assembly	2	331651	335128
153D	O-Ring – Stationary (FKM)	2	701970	702015
	O-Ring – Stationary (PTFE)		702084	711999
153E	O-Ring – Rotating (FKM)	2	701980	701962
	Seal Ring – Rotating (PTFE)		711963	701963

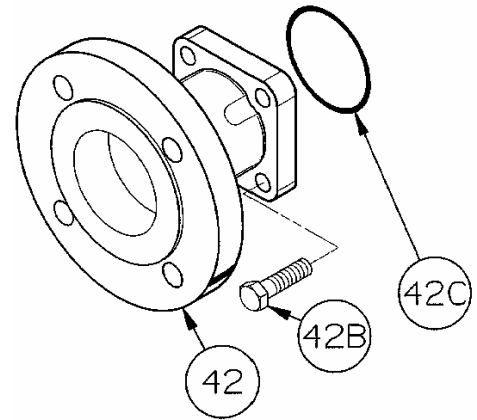


¹ Included in Maintenance Kit and Rebuild Kit

These components are included in the complete mechanical seal assemblies (Ref. No. 153), and are NOT available as replacement parts. Consult factory.

FLANGE OPTIONS

Ref. No.	Part Name	Parts Per Pump	Size 2 Part No.	Size 3 Part No.
42	Flange – ANSI 2" 150 lb. R.F.	1-2	651417	---
	Flange – ANSI 3" 150 lb. R.F.		---	651817



ANSI FLANGE

