

DIMENSIONS 107-107

Section 107  
 Effective APRIL 2003  
 Replaces SEPTEMBER 1991  
 Pg 1/5

TYPE

SIZE

UNIT  
 STYLE

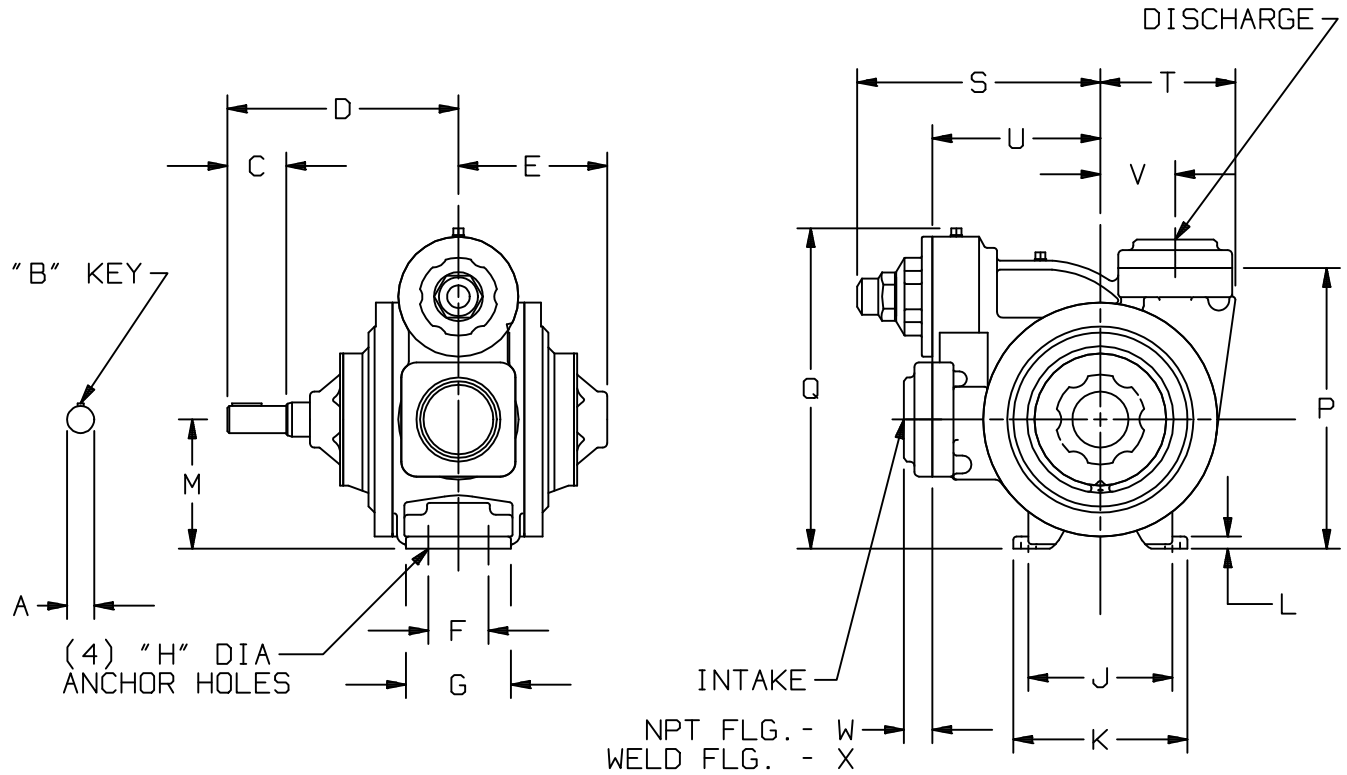
XL

3

PO



RIGHT HAND PUMP SHOWN. SHAFT PROJECTION IS OPPOSITE FOR LEFT HAND PUMP



OPTIONAL PIPE CONNECTIONS:  
 3" NPT FLANGE, NODULAR  
 3" WELD FLANGE, STEEL

MOTOR		UNITS	DIMENSIONS									
FRAME SIZE			A	B	C	D	E	F	G	H	J	K
		IN	1 1/8	1/4	2 7/16	9 5/8	6 5/16	2 1/2	4 3/8	5/8	6	7 1/4
		MM	28,6	6,4	61,9	244,5	160,3	63,5	111,1	15,9	152,4	184,2
			L	M	N	P	Q	R	S	T	U	V
		IN	1/2	5 3/8	—	11 1/16	13 3/8	—	10 1/4	5 5/8	7	3 1/8
		MM	12,7	136,5	—	269,9	339,7	—	260,4	142,9	177,8	79,4
			W	X	Y	Z	AA	BB	CC	DD	EE	FF
		IN	1 1/2	1 3/16	—	—	—	—	—	—	—	—
		MM	38,1	30,2	—	—	—	—	—	—	—	—
			WEIGHT									
		LBS	160									
		KG	72,6									

DIMENSIONS 107-107

Section 107  
 Effective Dec 2006  
 Replaces April 2003  
 Pg 2/5

TYPE

SIZE

UNIT STYLE

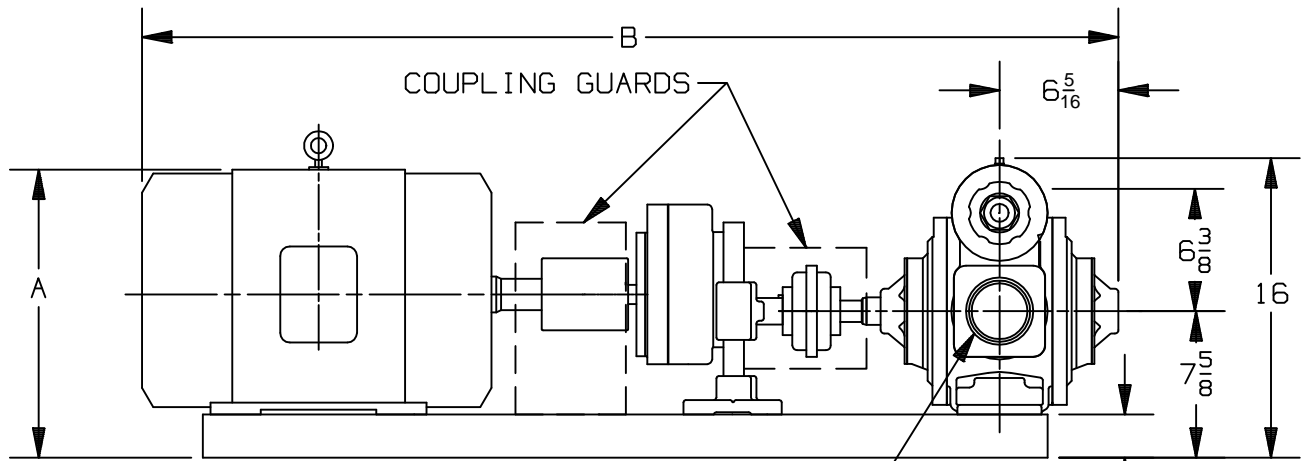
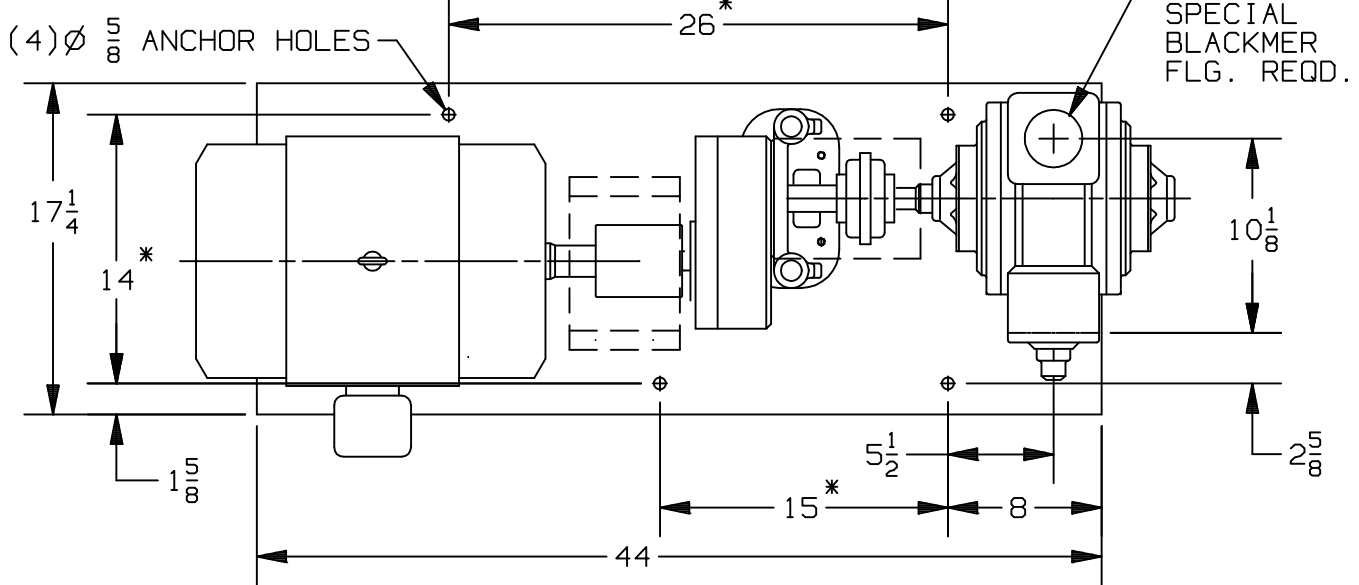
XL

3

HRA



RIGHT HAND ROTATION



UNIT DIMENSION LESS FLANGES

\* TOLERANCE  $\pm \frac{1}{8}$

TOLERANCE ON OTHER DIMENSIONS  $\pm \frac{1}{4}$

"A" DIMENSION LESS EYEBOLT

FLG. HT: 3" NPT - 1 1/2  
 3" WELD- 1 1/4

MOTOR			BASE NO.	DIMENSIONS		
FRAME SIZE		UNITS		A	B	
182T		901774	IN	11 7/8	48 3/4	
184T		901774	IN	11 7/8	48 3/4	
213T		901774	IN	13 3/8	48 3/4	
215T		901774	IN	13 3/8	49 3/8	
254T		901774	IN	15 5/8	53 1/4	
256T		901774	IN	15 5/8	55	

DIMENSIONS 107-107

Section 107  
 Effective Dec 2006  
 Replaces April 2003  
 Pg 3/5

TYPE

SIZE

UNIT  
 STYLE

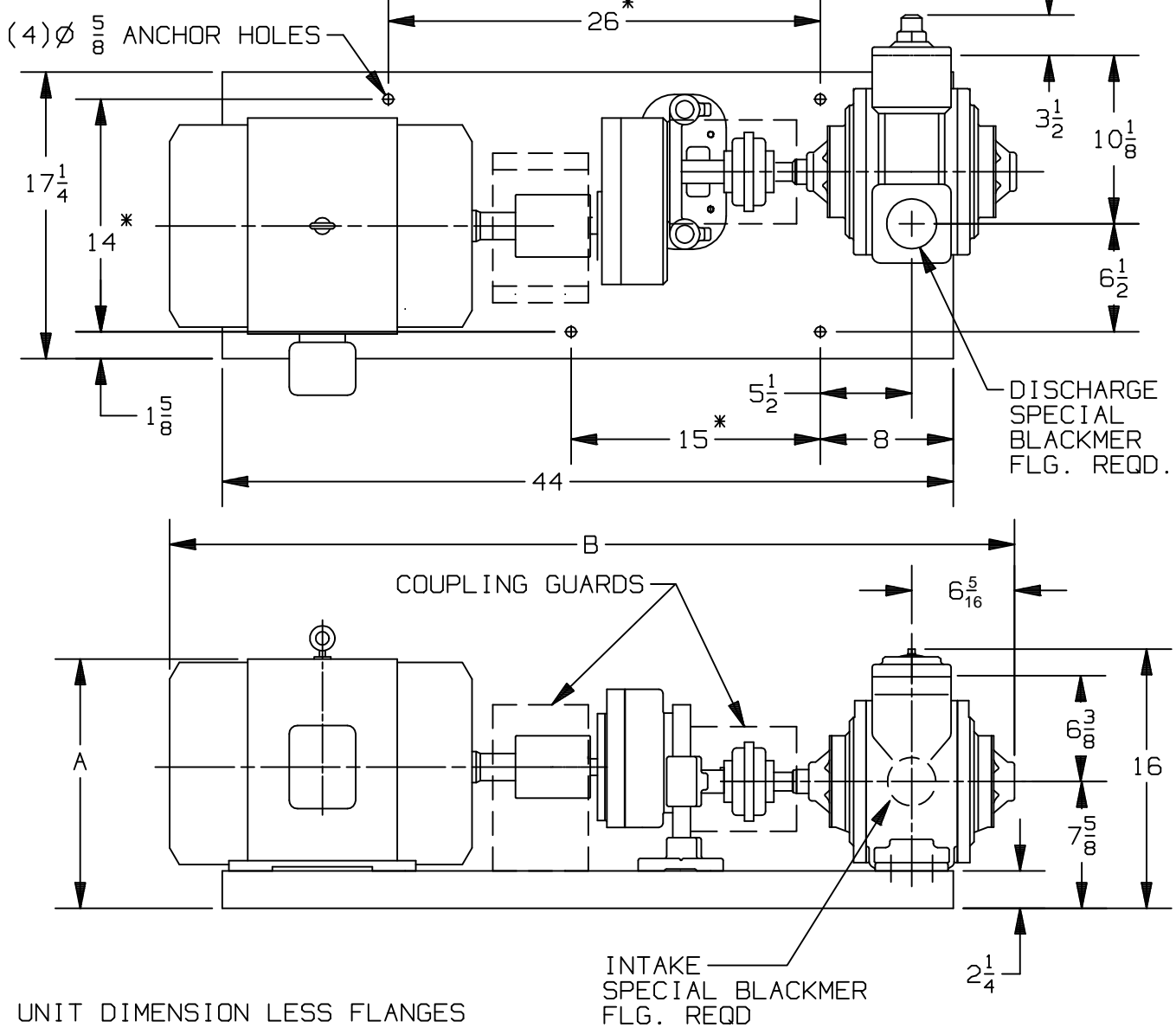
XL

3

HRA



LEFT HAND ROTATION



UNIT DIMENSION LESS FLANGES

\* TOLERANCE  $\pm \frac{1}{8}$

TOLERANCE ON OTHER DIMENSIONS  $\pm \frac{1}{4}$

"A" DIMENSION LESS EYEBOLT

FLG. HT: 3" NPT - 1 1/2  
 3" WELD- 1 1/4

MOTOR			BASE NO.	DIMENSIONS		
FRAME SIZE		UNITS		A	B	
182T		901774	IN	11 7/8	48 3/4	
184T		901774	IN	11 7/8	48 3/4	
213T		901774	IN	13 3/8	48 3/4	
215T		901774	IN	13 3/8	49 3/8	
254T		901774	IN	15 5/8	53 1/4	
256T		901774	IN	15 5/8	55	



TYPE	SIZE	UNIT STYLE
XL	3	HRB

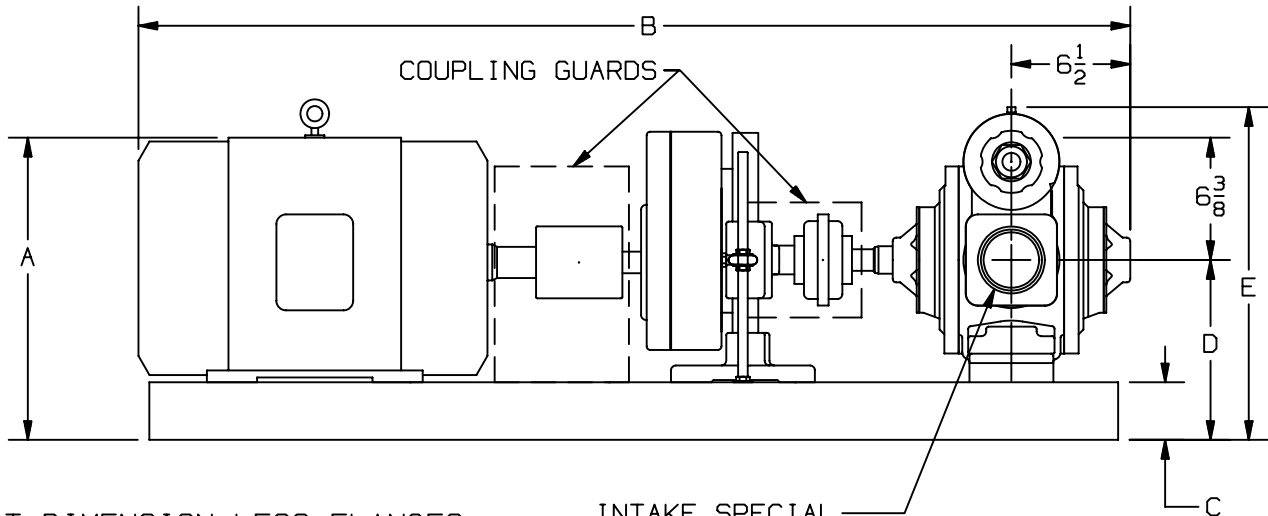
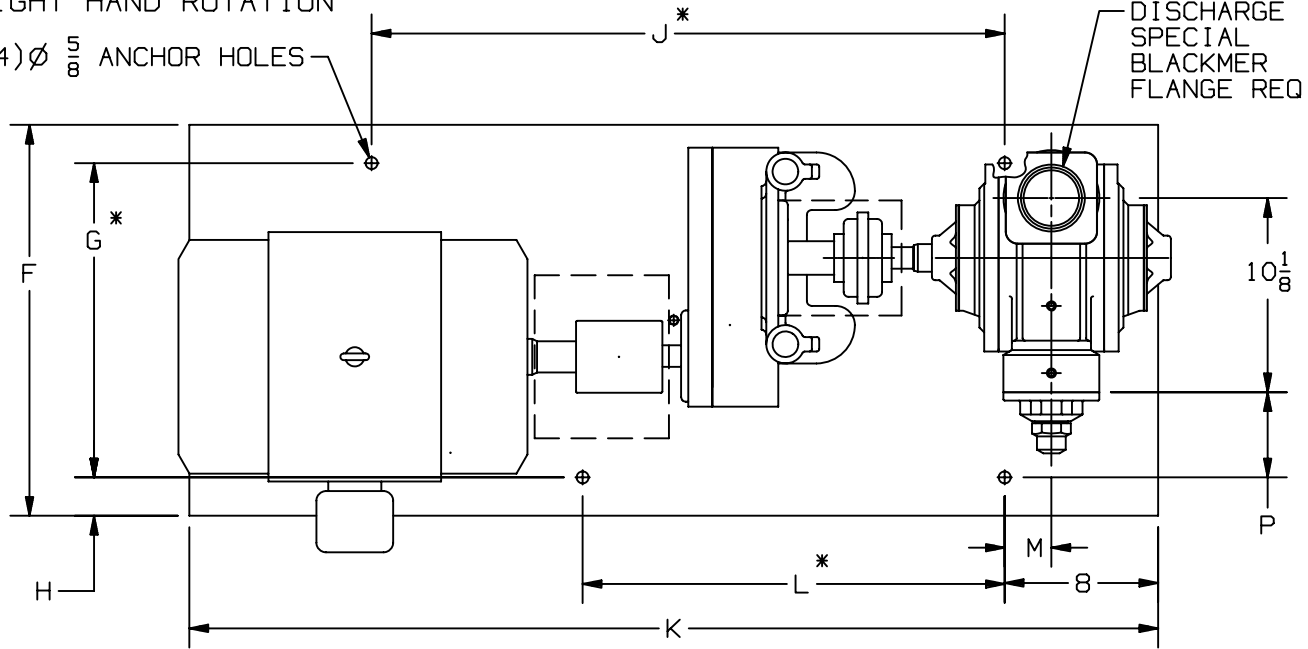
**DIMENSIONS 107-107**

Section	107
Effective	MARCH 2006
Replaces	APRIL 2003
Pg	4/5

RIGHT HAND ROTATION

(4)  $\phi \frac{5}{8}$  ANCHOR HOLES

DISCHARGE SPECIAL BLACKMER FLANGE REQ'D



UNIT DIMENSION LESS FLANGES

INTAKE SPECIAL BLACKMER FLANGE REQ'D

\* TOLERANCE  $\pm \frac{1}{8}$

TOLERANCE ON OTHER DIMENSIONS  $\pm \frac{1}{4}$

"A" DIMENSION LESS EYEBOLT

FLG. HT: 3" NPT - 1 1/2  
3" WELD- 1 1/4

MOTOR			BASE NO.	DIMENSIONS													
FRAME SIZE				UNITS	A	B	C	D	E	F	G	H	J	K	L	M	P
182T			901772	IN	127/8	461/8	2 1/4	8 5/8	17	17 1/4	14	1 5/8	26	44	15	2 3/8	2 5/8
184T			901772	IN	127/8	47 1/2	2 1/4	8 5/8	17	17 1/4	14	1 5/8	26	44	15	2 3/8	2 5/8
213T			901772	IN	13 5/8	49 1/2	2 1/4	8 5/8	17	17 1/4	14	1 5/8	26	44	15	2 3/8	2 5/8
215T			901772	IN	13 5/8	50 1/4	2 1/4	8 5/8	17	17 1/4	14	1 5/8	26	44	15	2 3/8	2 5/8
254T			901773	IN	16 3/8	54	3	9 3/8	17 3/4	20 3/8	16 3/8	2	33	50 1/2	22	2 1/2	4 1/2
256T			901773	IN	16 3/8	55 3/4	3	9 3/8	17 3/4	20 3/8	16 3/8	2	33	50 1/2	22	2 1/2	4 1/2

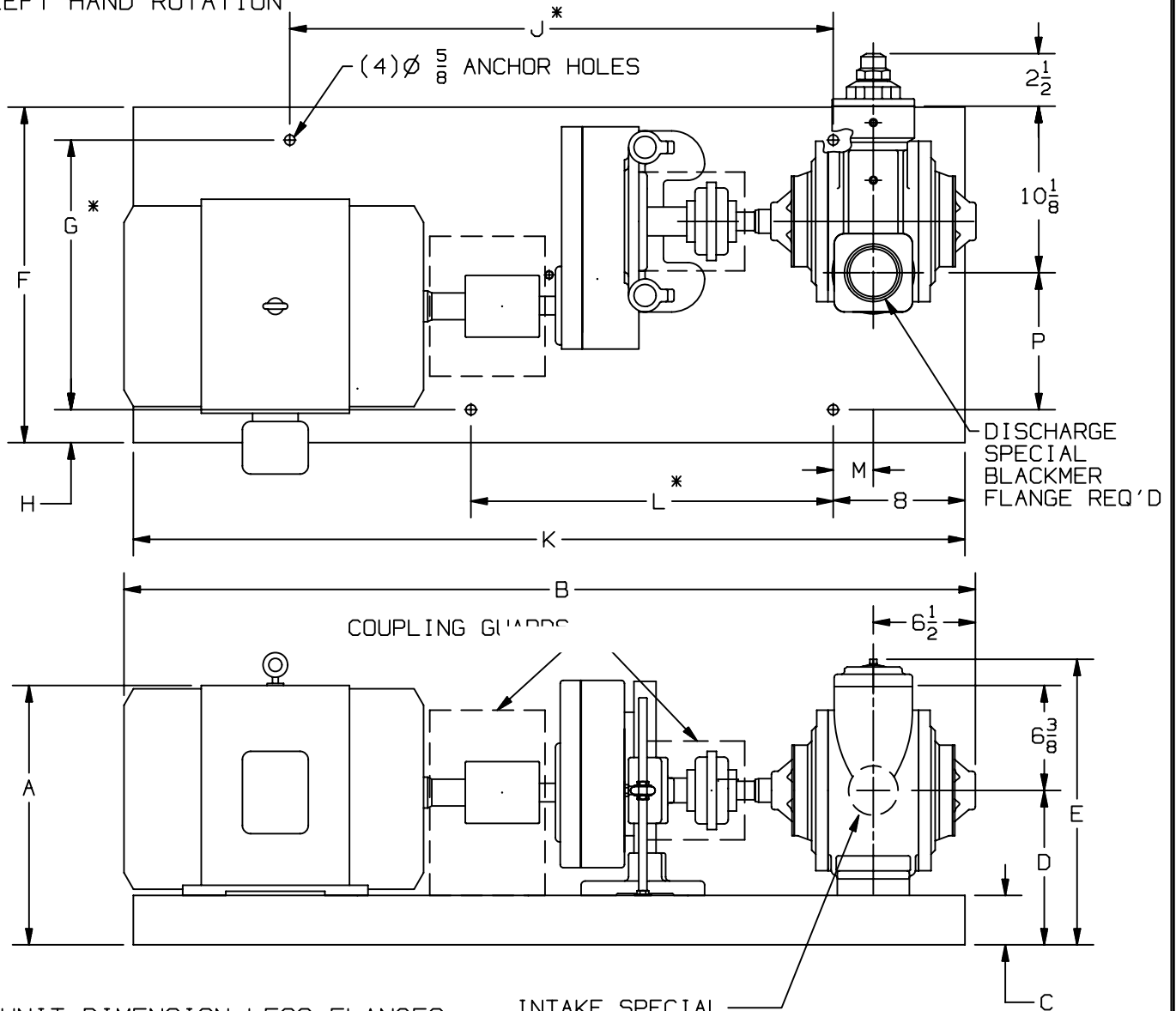
DIMENSIONS 107-107

Section 107  
 Effective MARCH 2006  
 Replaces APRIL 2003  
 Pg 5/5

TYPE	SIZE	UNIT STYLE
XL	3	HRB



LEFT HAND ROTATION



UNIT DIMENSION LESS FLANGES

INTAKE SPECIAL BLACKMER FLANGE REQ'D

\* TOLERANCE  $\pm \frac{1}{8}$

TOLERANCE ON OTHER DIMENSIONS  $\pm \frac{1}{4}$

"A" DIMENSION LESS EYEBOLT

FLG. HT: 3" NPT - 1 1/2  
 3" WELD- 1 1/4

MOTOR			BASE NO.	DIMENSIONS													
FRAME SIZE				UNITS	A	B	C	D	E	F	G	H	J	K	L	M	P
182T			901772	IN	12 <sup>7</sup> / <sub>8</sub>	46 <sup>1</sup> / <sub>8</sub>	2 1/4	8 5/8	17	17 1/4	14	1 5/8	26	44	15	2 3/8	6 1/2
184T			901772	IN	12 <sup>7</sup> / <sub>8</sub>	47 1/2	2 1/4	8 5/8	17	17 1/4	14	1 5/8	26	44	15	2 3/8	6 1/2
213T			901772	IN	13 <sup>5</sup> / <sub>8</sub>	49 1/2	2 1/4	8 5/8	17	17 1/4	14	1 5/8	26	44	15	2 3/8	6 1/2
215T			901772	IN	13 <sup>5</sup> / <sub>8</sub>	50 1/4	2 1/4	8 5/8	17	17 1/4	14	1 5/8	26	44	15	2 3/8	6 1/2
254T			901773	IN	16 <sup>3</sup> / <sub>8</sub>	54	3	9 3/8	17 3/4	20 3/8	16 3/8	2	33	50 1/2	22	2 1/2	8 3/8
256T			901773	IN	16 <sup>3</sup> / <sub>8</sub>	55 3/4	3	9 3/8	17 3/4	20 3/8	16 3/8	2	33	50 1/2	22	2 1/2	8 3/8