

BLACKMER PARTS LIST

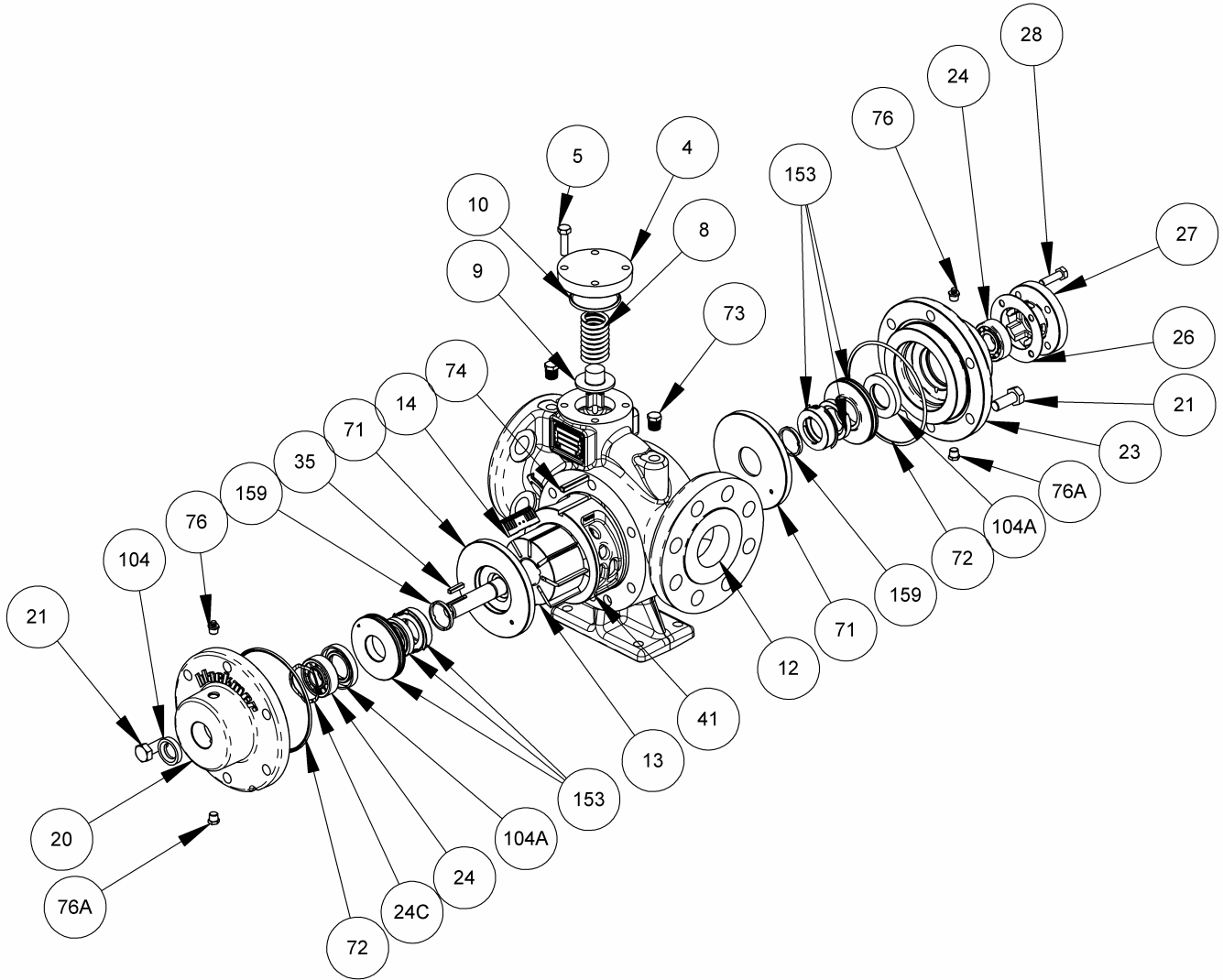
PUMP MODEL: LGL158A

960438
Page 1 of 2

PARTS LIST
501-K01

(See Instructions 501-K00 for Installation, Operation and Maintenance)

Section 501
Effective Oct 2007
Replaces Aug 2005



Ref. No.	Description	Parts Per Pump	Part No.	Ref. No.	Description	Parts Per Pump	Part No.
4	Cover - Relief Valve (R/V)	1	415701	28	Capscrews - Bearing Cover	4	920122
5	Capscrews - R/V Cover	4	920122	35	Key - Shaft	1	¹ 909152
8	Spring - R/V (225 psi)	1	471400	41	Liner	1	² 185701
9	Valve - R/V	1	455701	71	Disc	2	¹ 065701
10	O-Ring - R/V Cover	1	¹ 711924	72	O-Ring - Head	2	¹ 702169
12	Casing	1	015701	73	Gage Plug	2	908198
13	Rotor & Shaft Asy.	1	² 265701	74	Key - Liner	1	² 909177
14	Vane - Duravane	8	¹ 094860	76	Grease Fitting	2	317815
20	Head Inboard	1	035701	76A	Grease Relief Fitting	2	701992
21	Capscrews - Head	12	920468	104	Grease Seal - Outer	1	¹ 331921
23	Head Outboard	1	035703	104A	Grease Seal - Inner	2	¹ 335702
24	Ball Bearing	2	¹ 903148	159	Seal Spacer Ring	2	² 375701
24C	Bearing Spring	1	¹ 903187	—	Kit - Maintenance	—	899222
26	Shim Kit (6 ea: .002", .005" & .010")	Varies	¹ 905172	—	Kit - Rebuild	—	899122
27	Bearing Cover	1	045701	—	Priming Valve (for Underground Tank Installations)	—	455750

¹ Included in Maintenance Kit and Rebuild Kit

² Included in Rebuild Kit

Keep this parts list with Installation, Operation and Maintenance Instructions.

MECHANICAL SEAL – LPG

Ref. No.	Part Name	Parts Per Pump	Part No.
153	Mechanical Seal Assembly - SNCN	2	335703
153A	Stationary Seat (Steel)	2	**
153B	Seal Face (Carbon)	2	**
153C	Jacket Assembly	2	**
153D	O-Ring - Stationary (Buna-N)	2	701934
153E	O-Ring Rotating (Buna-N)	2	711917

** NOTE: Mechanical Seal Ref. No. 153 is only sold as a complete assembly. Ref. Nos. 153A, 153B & 153C are not available as separate replacement parts.

