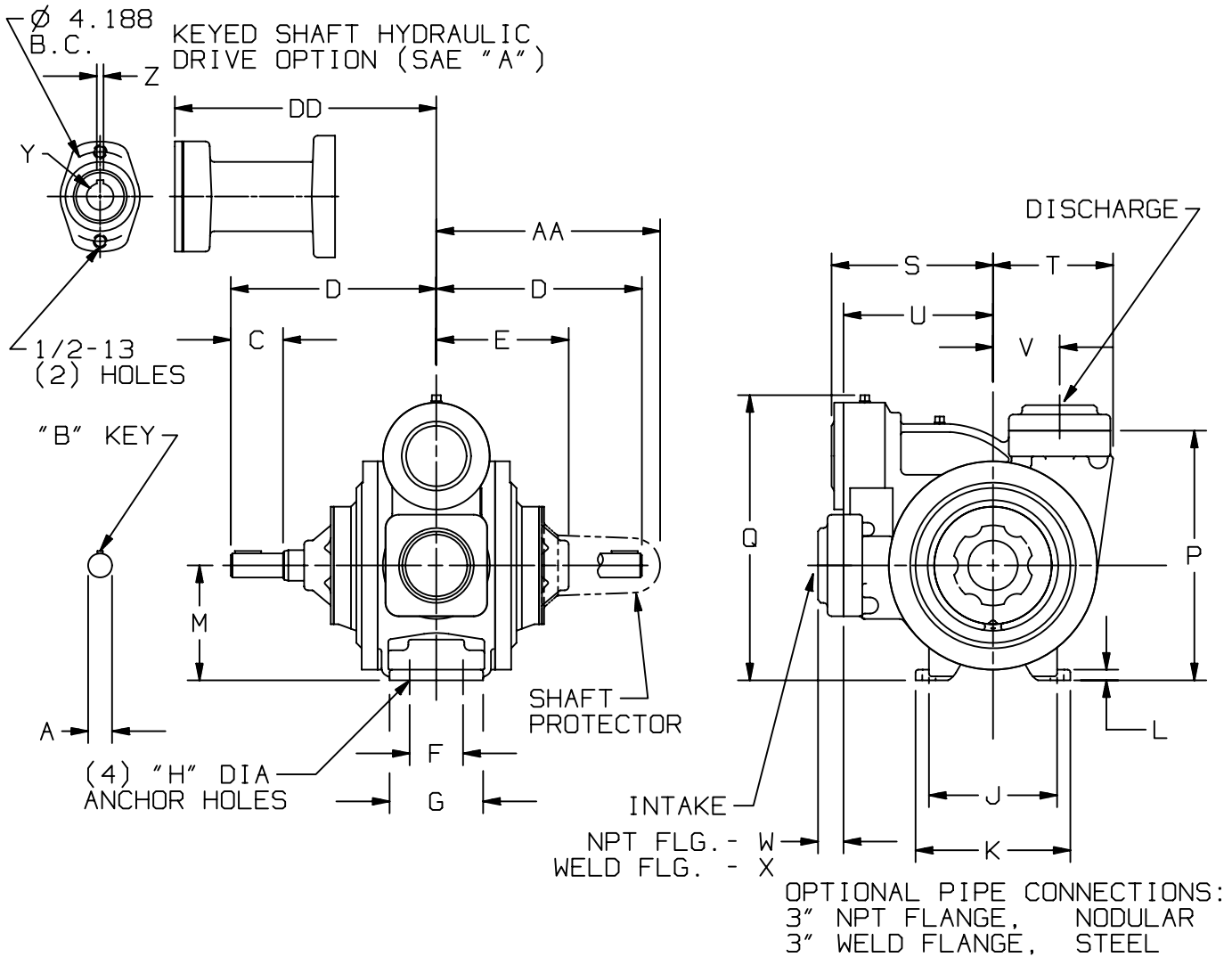




TYPE	SIZE	UNIT STYLE
CRL	3	PO

DIMENSIONS 701-107	
Section	701
Effective	August 2002
Replaces	April 1984



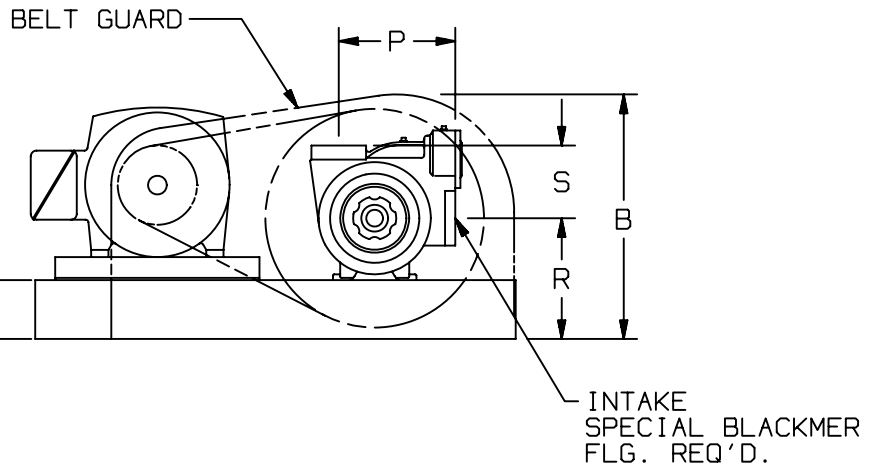
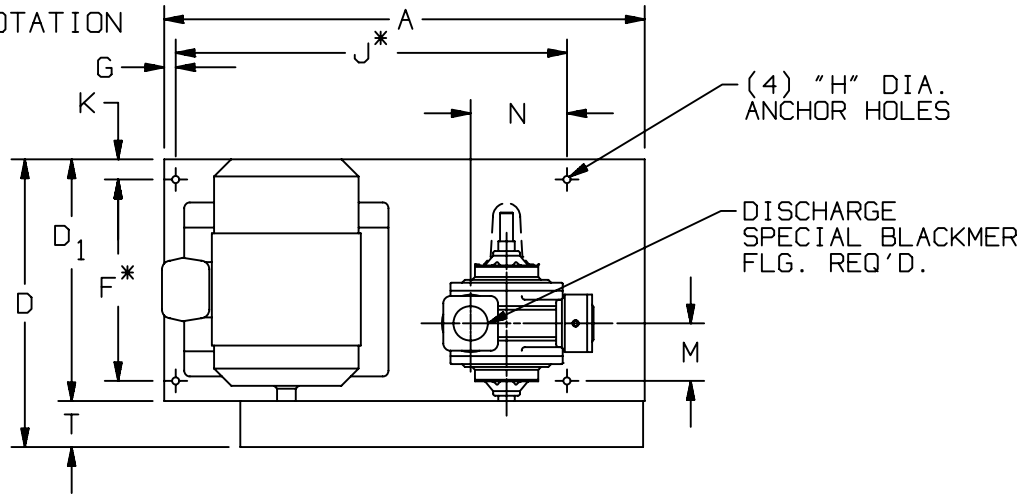
MOTOR			UNITS	DIMENSIONS									
FRAME SIZE				A	B	C	D	E	F	G	H	J	K
			IN	1 1/8	1/4	2 7/16	9 5/8	6 5/16	2 1/2	4 3/8	5/8	6	7 1/4
			MM	28,6	6,4	61,9	244,5	160,3	63,5	111,1	15,9	152,4	184,2
				L	M	N	P	Q	R	S	T	U	V
			IN	1/2	5 3/8	—	11 1/16	13 3/8	—	7 5/8	5 5/8	7	3 1/8
			MM	12,7	136,5	—	269,9	339,7	—	193,7	142,9	177,8	79,4
				W	X	Y	Z	AA	BB	CC	DD	EE	FF
			IN	1 1/2	1 3/16	1 1/4	5/16	10 3/4	—	—	12 1/4	—	—
			MM	38,1	30,2	31,8	7,9	282,6	—	—	311,2	—	—
				WEIGHT									
			LBS	160									
			KG	72,6									



TYPE	SIZE	UNIT STYLE
CRL	3	VB

DIMENSIONS 701-107	
Section	701
Effective	August 2002
Replaces	September 1989

RIGHT HAND ROTATION



FLANGE	UNIT	HGT.
3" NPT	IN	1 1/2
	MM	38,1
3" WELD	IN	1 3/16
	MM	30,2

UNIT DIMENSIONS LESS FLANGES

* TOLERANCE ±1/8

TOLERANCE ON OTHER DIMENSIONS ±1/4

SPEED		H.P.		UNIT NO.	DIMENSIONS																	
1800	1200	FRAME SIZE	1800		1200	UNIT	A	B	D	D ₁	F	G	H	J	K	M	N	P	Q	R	S	T
330	220	184T	5	2	875115	IN	36 7/8	21 1/2	21 3/8	15 1/2	12	1	5/8	28	1 3/4	5	6 1/8	10 1/8	5 1/8	10 1/2	6 5/16	3 7/8
						MM	936,6	546,1	542,9	393,7	304,8	25,4	15,9	711,2	44,5	127	155,6	257,2	130,2	266,7	160,3	98,4
420	280	213T	7.5	3	875116	IN	—	21 1/2	—	—	—	—	—	—	—	—	—	—	—	—	—	—
						MM	—	546,1	—	—	—	—	—	—	—	—	—	—	—	—	—	—
420	280	215T	10	5	875186	IN	—	21 1/2	—	—	—	—	—	—	—	—	—	—	—	—	—	—
						MM	—	546,1	—	—	—	—	—	—	—	—	—	—	—	—	—	—
520	340	213T	7.5	3	875119	IN	—	21 1/2	—	—	—	—	—	—	—	—	—	—	—	—	—	—
						MM	—	546,1	—	—	—	—	—	—	—	—	—	—	—	—	—	—
520	340	215T	10	5	875117	IN	—	21 1/2	—	—	—	—	—	—	—	—	—	—	—	—	—	—
						MM	—	546,1	—	—	—	—	—	—	—	—	—	—	—	—	—	—
640	420	215T	10	5	875118	IN	—	21 1/2	—	—	—	—	—	—	—	—	—	—	—	—	—	—
						MM	—	546,1	—	—	—	—	—	—	—	—	—	—	—	—	—	—
640	420	254T	15	7.5	875188	IN	41 3/4	21 3/4	25 5/8	21	17 1/2	1	5/8	34	1 3/4	5	8 3/8	10 1/8	5 1/8	10 1/2	6 5/16	4 1/8
						MM	1060,4	552,4	650,9	533,4	444,5	25,4	15,9	863,6	44,5	127	212,7	257	130	266,7	160,3	104,8

SAME AS ABOVE

DIMENSIONS 701 - 107

Section 701
 Effective Dec 2006
 Replaces April 2003
 Pg 3/4

TYPE

SIZE

UNIT
STYLE

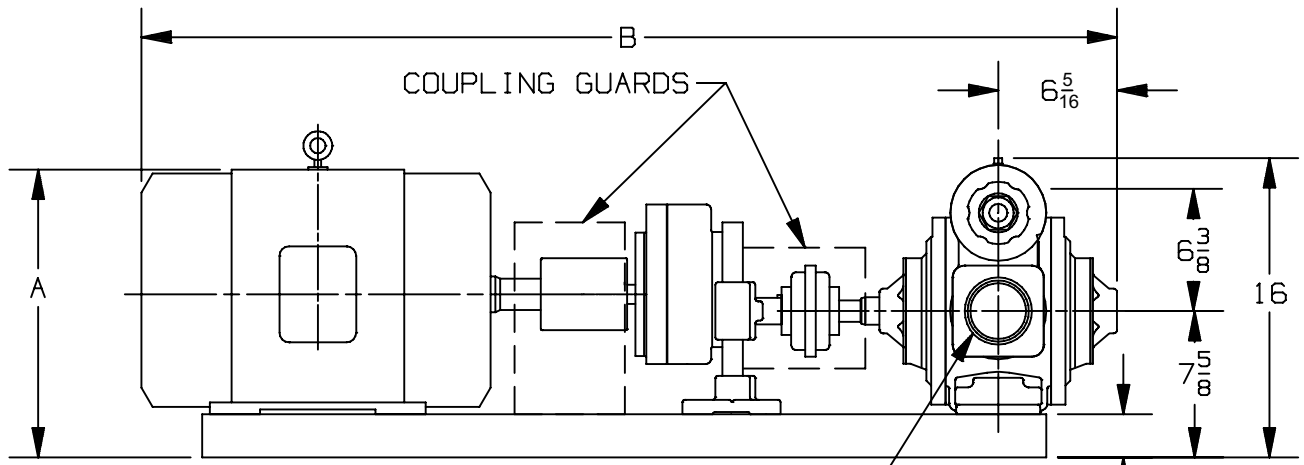
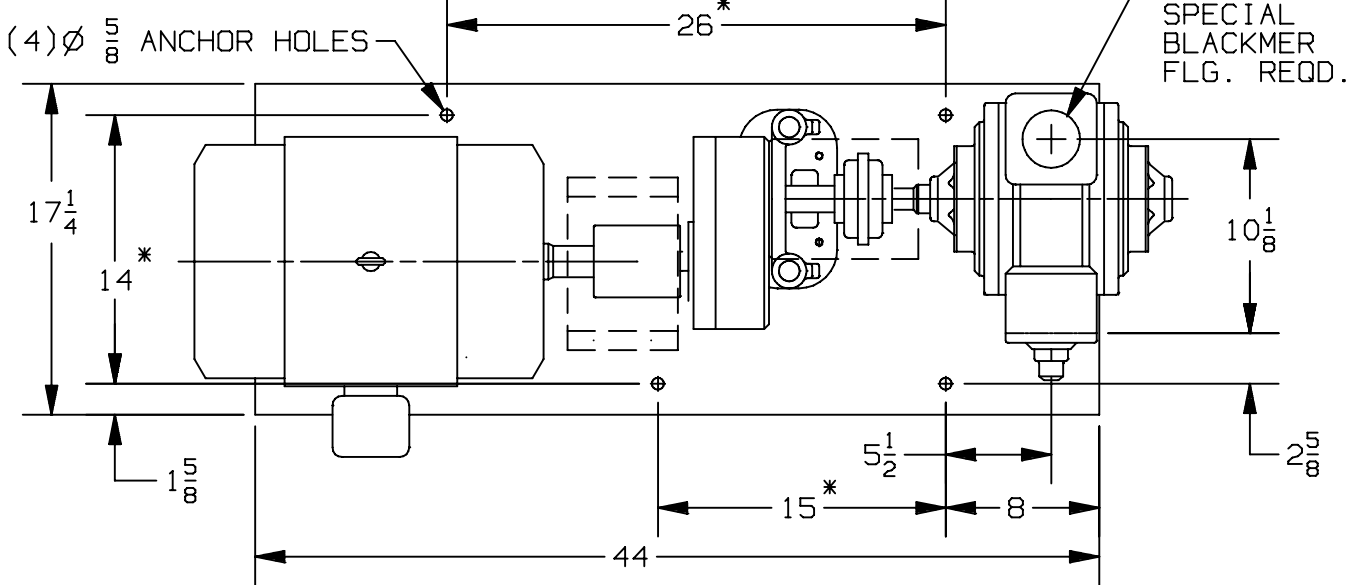
CRL

3

HRA



RIGHT HAND ROTATION



UNIT DIMENSION LESS FLANGES

* TOLERANCE $\pm \frac{1}{8}$

TOLERANCE ON OTHER DIMENSIONS $\pm \frac{1}{4}$

"A" DIMENSION LESS EYEBOLT

FLG. HT: 3" NPT - 1 1/2
 3" WELD- 1 1/4

MOTOR			BASE NO.	DIMENSIONS		
FRAME SIZE		UNITS		A	B	
182T		901774	IN	11 7/8	48 3/4	
184T		901774	IN	11 7/8	48 3/4	
213T		901774	IN	13 3/8	48 3/4	
215T		901774	IN	13 3/8	49 3/8	
254T		901774	IN	15 5/8	53 1/4	
256T		901774	IN	15 5/8	55	

DIMENSIONS 701 - 107

Section 701
 Effective Dec 2006
 Replaces April 2003
 Pg 4/4

TYPE

SIZE

UNIT
STYLE

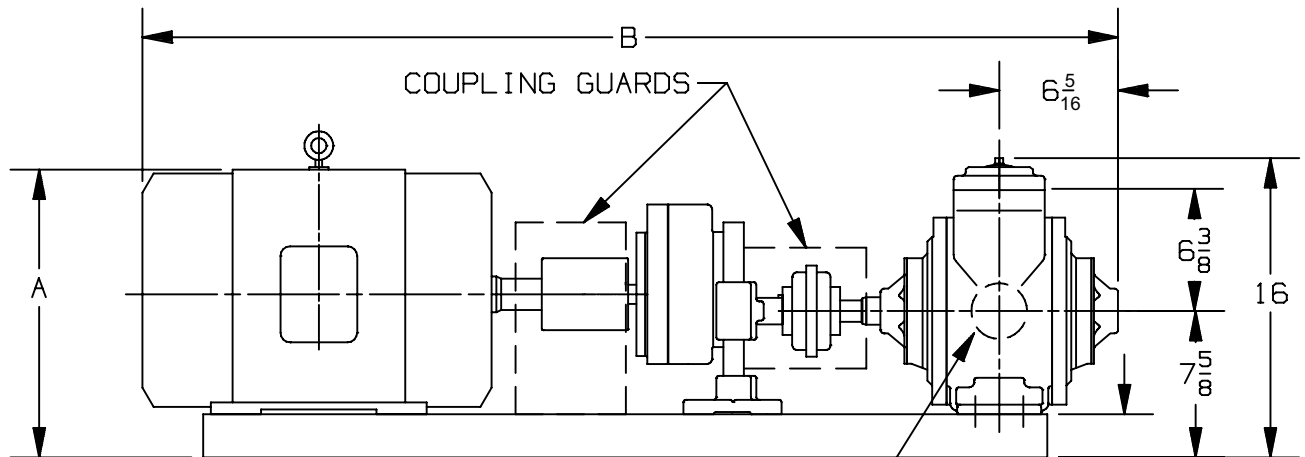
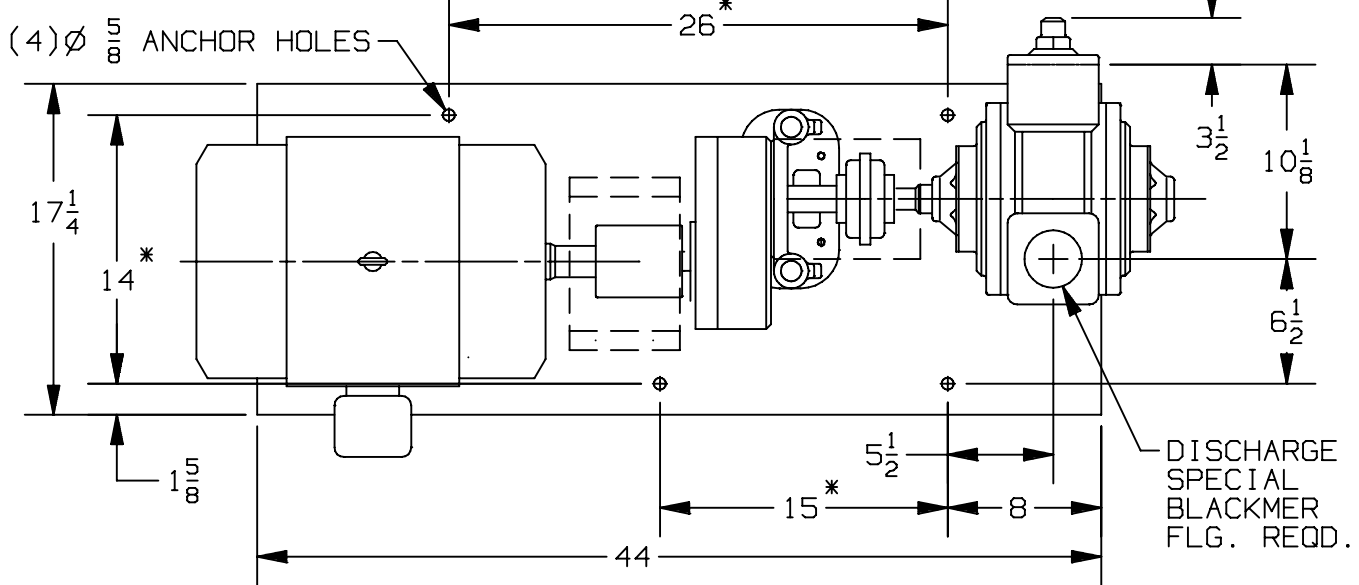
CRL

3

HRA



LEFT HAND ROTATION



UNIT DIMENSION LESS FLANGES

* TOLERANCE $\pm \frac{1}{8}$

TOLERANCE ON OTHER DIMENSIONS $\pm \frac{1}{4}$

"A" DIMENSION LESS EYEBOLT

FLG. HT: 3" NPT - 1 1/2
 3" WELD- 1 1/4

MOTOR			BASE NO.	DIMENSIONS		
FRAME SIZE		UNITS		A	B	
182T		901774	IN	11 7/8	48 3/4	
184T		901774	IN	11 7/8	48 3/4	
213T		901774	IN	13 3/8	48 3/4	
215T		901774	IN	13 3/8	49 3/8	
254T		901774	IN	15 5/8	53 1/4	
256T		901774	IN	15 5/8	55	